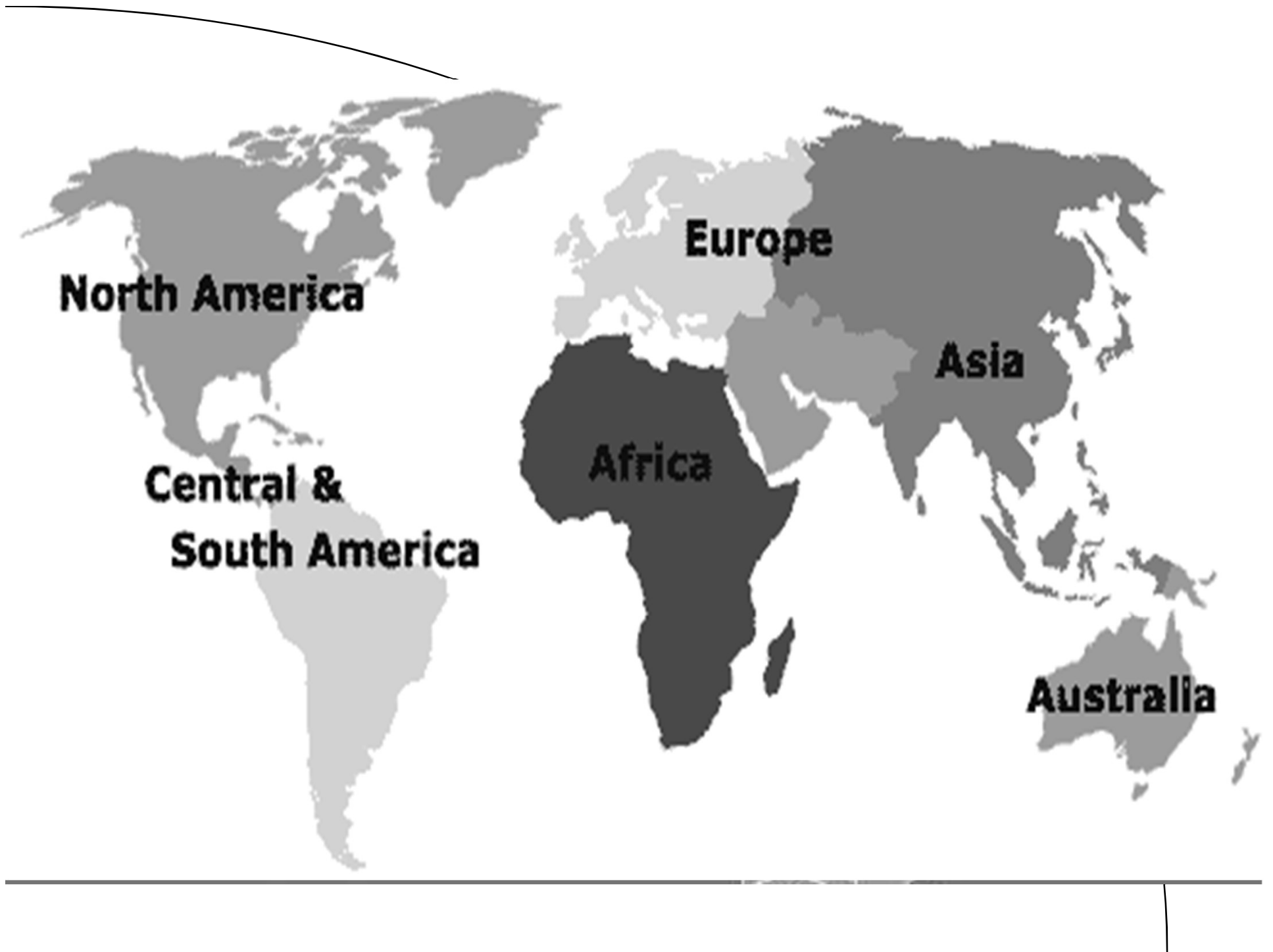


I. Old Immigration = prior to 1880

- A. Mostly from Western Europe = Germany, Great Britain, Ireland, Sweden
 - mostly Protestant



North America

**Central &
South America**

Europe

Africa

Asia

Australia

B. Push / Pull Factors

1. Reasons for leaving (push factors)

= **Irish potato famine (fungus destroyed potato crops in Ireland)**

= **large population (too many people) in Europe**

= **not enough land in their countries to farm**

= **not enough industrial jobs available**



THE DEPARTURE



2. Reasons for coming (pull factors)

- need for cheap labor (many settled in cities)
- many moved west to be farmers (Homestead Act)

E. Restrictions = very few

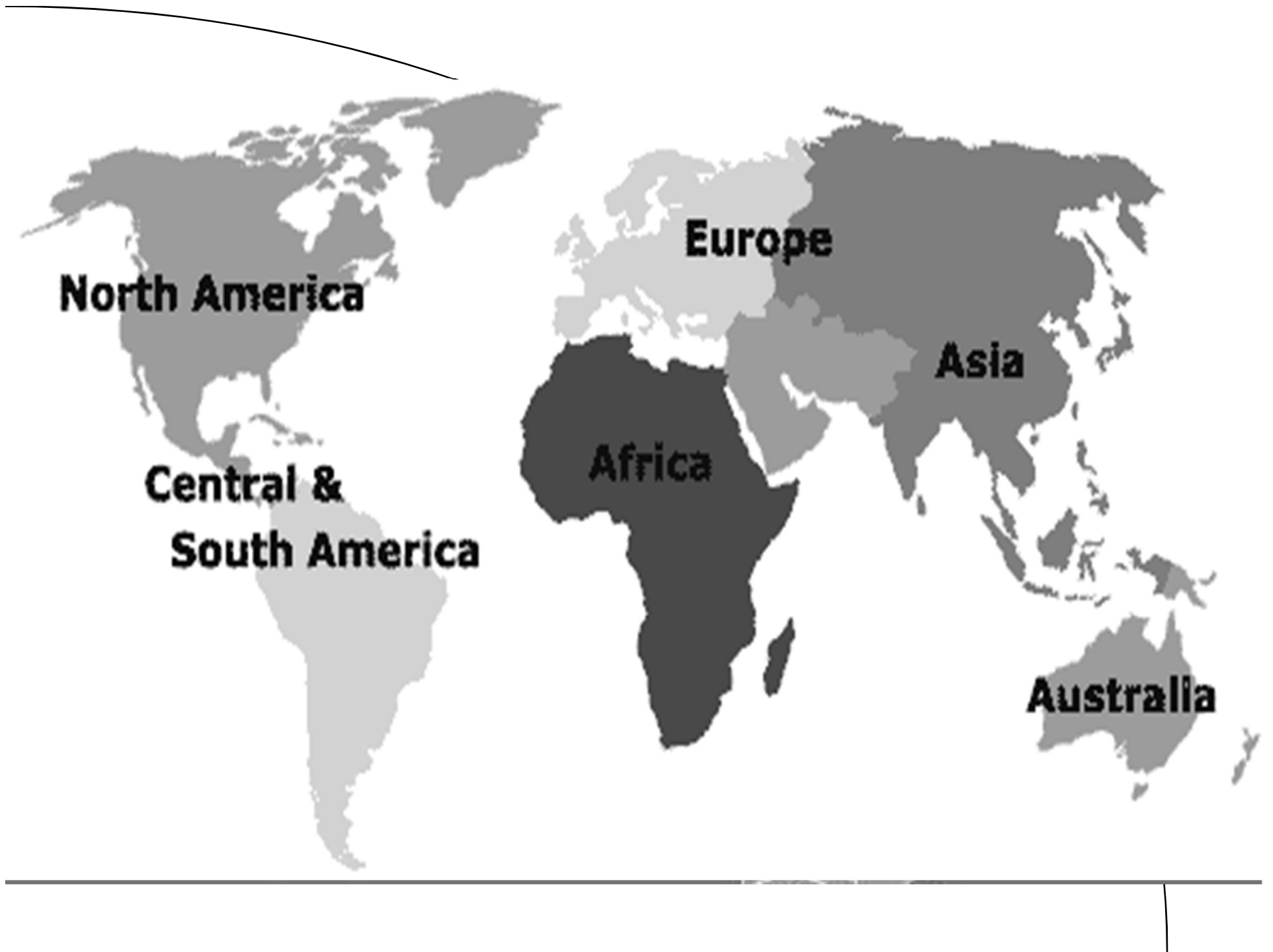
The foreign-born population of the U.S. nearly doubled between 1870 and 1900.



II. New Immigration = 1881-1920

- A. Mostly from Southern and Eastern Europe =
Italy, Greece, Russia, Poland
 - mostly Catholic & Jewish





North America

**Central &
South America**

Europe

Africa

Asia

Australia

B. Push / Pull Factors

- Reasons for leaving (push factors)

- = fleeing religious persecution

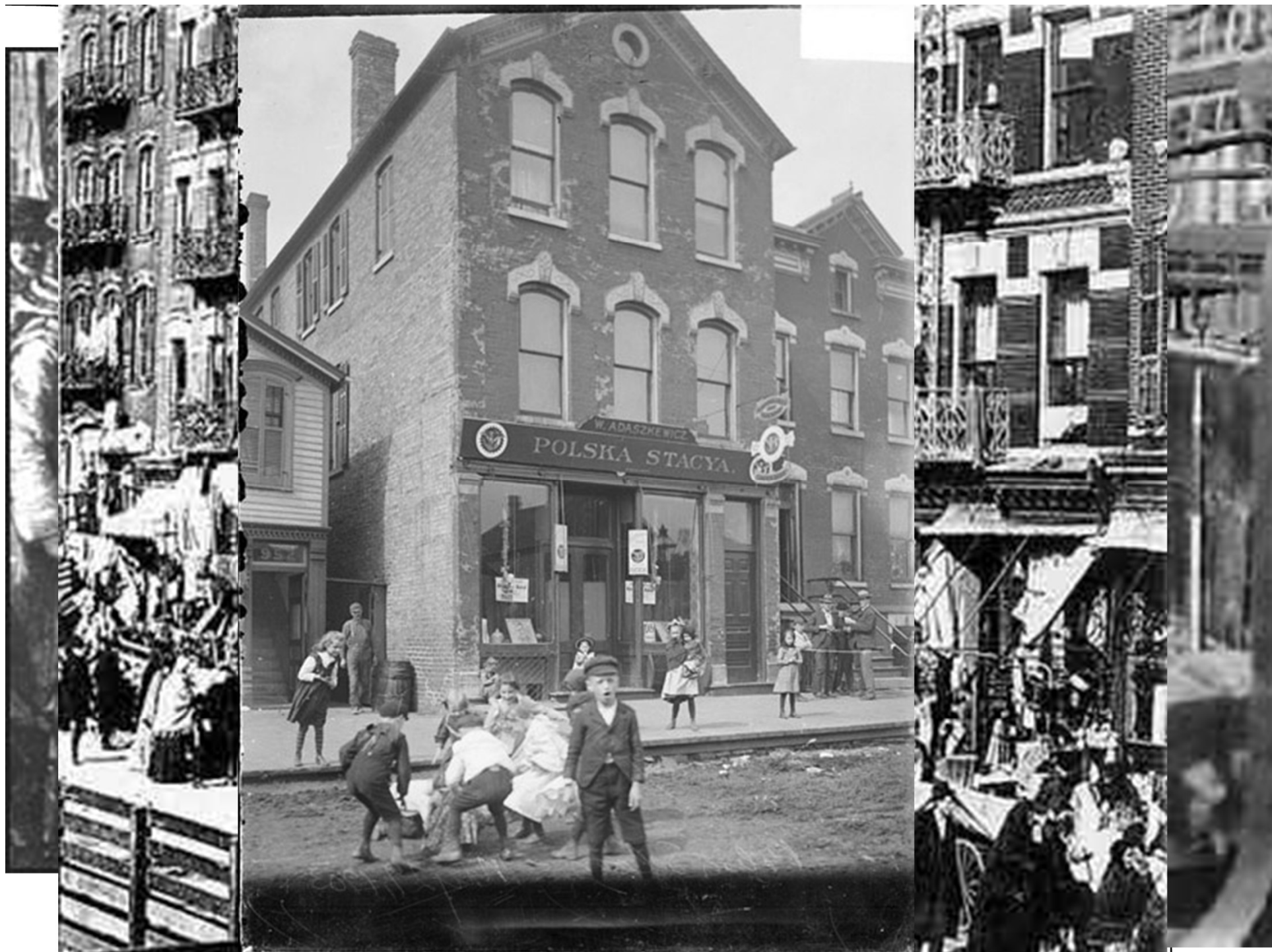
- = not enough factory jobs available

- 2. Reasons for coming (pull factors)

- = surplus of industrial jobs in America – most settle in cities

- = freedom in America

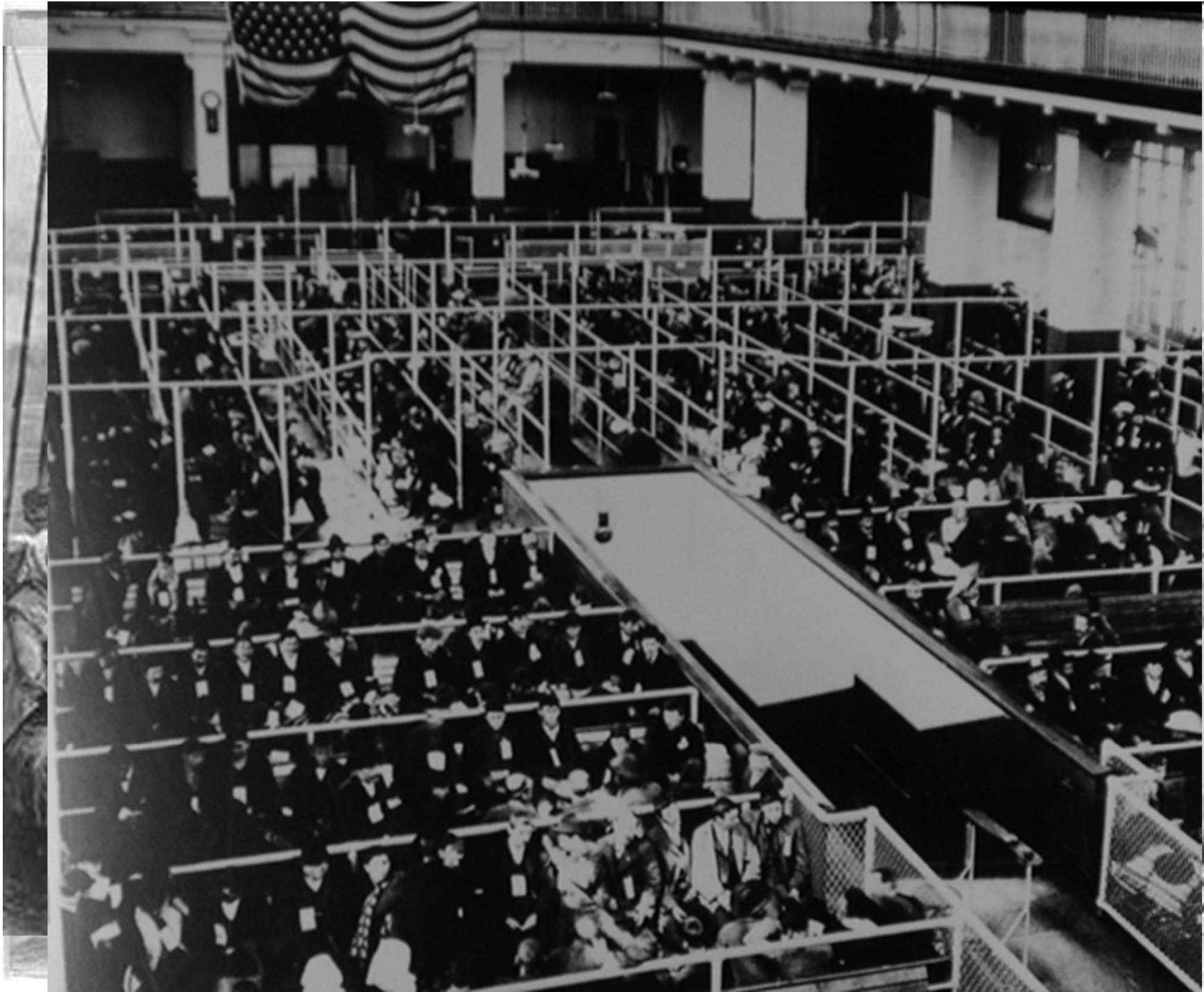
E. Restrictions = convicts, insane, people on charity



Immigrants Journey to America

A. European Immigrants

- most were crammed in steerage
- most arrived in New York City (Ellis Island)
- screened for disease
- many immigrant's names were changed
- Statue of Liberty became a symbol of American immigration



III. Asian Immigration = 1881-1920

A. Mostly from China and Japan

- most settle in the west
- brought Buddhism and Daoism to America



B. Push / Pull Factors

1. Reasons for leaving
(push factors)

= most live in poverty
(poor)

2. Reasons for coming
(pull factors)

= opportunity for a better
life (higher pay)

= cheap labor needed to
build RR's in American
west



Chinese workmen on the CPR, 1880's. (Provincial Archives of B.C. #41770)

Asian Immigrants (arrive on west coast)

- most were crammed in steerage
- most arrived in San Francisco (Angel Island)
- screened for disease
- most Asian immigrants were turned away

U.S





C. Restrictions =

- could not own land

HIP! HURRAH!

CHINESE EXCLUDED

—The—

Democratic Chinese Exclusion Bill

Has Been Signed by

OUR DEMOCRATIC PRESIDENT

Hip! Hurrah! The White Man is on Top.

06.05.1882

The Chinese Exclusion Act

V. Americans Against Immigration

Nativists = Americans Against Immigration

- A. Resented Immigrants working for lower wages
- = use violence against immigrants
- = work to restrict immigration in America

PAPIST IMMIGRANTS ARE WRECKING OUR ECONOMY WITH THEIR FECUNDITY! WE MUST ERECT A WALL OF BRASS AROUND THE COUNTRY FOR THE EXCLUSION OF CATHOLICS!

1780



(“WALL OF BRASS...” IS QUOTED FROM JOHN JAY, THE FIRST CHIEF JUSTICE OF THE SUPREME COURT.)

CHINESE IMMIGRANTS AREN'T ASSIMILATING... AND IF WE LET TOO MANY IN, THEY'LL UNDERMINE OUR ECONOMY!

1850



NOW, I'VE GOT NOTHING AGAINST JEWS... BUT THE JEWS ARE COMING IN HUGE NUMBERS! THE ECONOMY CAN'T TAKE IT!

1920



WE'VE GOT NOTHING AGAINST MEXICANS. BUT THEY REFUSE TO ASSIMILATE! THEY'RE RUINING OUR ECONOMY!

NOW



WE SHOULD ERECT A WALL.

HISTORY MARCHES ON; NATIVISM MARCHES IN PLACE

- Chinese Exclusion Act 1882
 - said no Chinese worker could enter the U.S. for 10 years.
 - stopped almost all Chinese from coming to the U.S.
- Gentlemen's Agreement
 - current Japanese Americans would get more rights if Japan did not send anymore immigrants